



Steven Kons, LLB MHA
Minister for Primary Industries and Water

Dear Minister

In accordance with the requirements of Section 36 of the *State Service Act 2000* and Section 27 of the *Financial Management and Audit Act 1990*, I am pleased to submit the 2004-05 Annual Report of the Inland Fisheries Service for presentation to Parliament.

Yours sincerely

A handwritten signature in black ink, which appears to read "John Diggle".

John Diggle
Director of Inland Fisheries

17 October 2005

CONTENTS

OVERVIEW	3
DIRECTOR'S HIGHLIGHTS OF THE YEAR	3
NEW LEGISLATION	5
INLAND FISHERIES ADVISORY COUNCIL	6
CORPORATE PLAN	7
LEGISLATIVE FUNCTIONS AND RESPONSIBILITIES	8
ORGANISATIONAL STRUCTURE AND CONTACTS	9
OUTPUT GROUP 1 RECREATIONAL FISHERIES MANAGEMENT	10
OUTPUT 1.1 FISHERIES MANAGEMENT PLANNING	10
OUTPUT 1.2 FISHERIES DEVELOPMENT AND ASSESSMENT	11
OUTPUT 1.3 SALMON PONDS HATCHERY PRODUCTION	12
OUTPUT 1.4 STOCKING OF INLAND WATERS	13
OUTPUT 1.5 LICENSING OF RECREATIONAL FISHING	14
OUTPUT GROUP 2 NATIVE FISH MANAGEMENT	18
OUTPUT 2.1 TASMANIAN GALAXIAS RECOVERY PROGRAM	18
OUTPUT GROUP 3 COMMERCIAL FISHERIES	20
OUTPUT 3.1 LICENSING OF FISH DEALERS, FISH FARMS AND PRIVATE FISHERIES	20
OUTPUT 3.2 COMMERCIAL EEL FISHERY	20
OUTPUT GROUP 4 PEST FISH MANAGEMENT	22
OUTPUT 4.1 CARP MANAGEMENT PROGRAM	22
OUTPUT 4.2 EASTERN GAMBUSIA PROGRAM	23
OUTPUT 4.3 INTRODUCED YABBY PROGRAM	23
OUTPUT GROUP 5 ENVIRONMENTAL ISSUES, ADVICE AND PROJECTS	24
OUTPUT 5.1 ENVIRONMENTAL ISSUES AND ADVICE	24
OUTPUT 5.2 ENVIRONMENTAL MANAGEMENT PROJECTS	24
OUTPUT GROUP 6 FISHERIES COMPLIANCE	26
OUTPUT 6.1 ENFORCEMENT	26
OUTPUT GROUP 7 BIOLOGICAL CONSULTANCY	28
OUTPUT 7.1 ENVIRONMENTAL CONSULTANCY SERVICE TO HYDRO TASMANIA	28
BUSINESS SERVICES	29
LIST OF TABLES	
Table 1 Members of the Inland Fisheries Advisory Council in 2004-05	6
Table 2 Fish stock number, species and age class production at the Salmon Ponds in 2004-05	12
Table 3 Fish stock number, species and age class for the stocking for public fishing in 2004-05	13
Table 4 Licence holder preference for renewal payment methods in 2004-05	14
Table 5 Licence holder preference for new licence payment methods in 2004-05	15
Table 6 Tasmanian angling licence fees and structure for the past four years	15
Table 7 Number of angling licences sold per category over the past four years	16
Table 8 Number of angling licences sold interstate and overseas over the past four years	16
Table 9 Number of angling licences sold per category interstate and overseas in 2004-05	16
Table 10 List of prosecutions in 2004-05	26
Table 11 Proportion of time spent by enforcement officers on operational activities in 2004-05	27
Table 12 List of public meetings and community events attended by Service staff in 2004-05	31
APPENDICES	
Appendix 1 Stocking of inland waters for public fishing in 2004-05	32
Appendix 2 Stocking of private dams for public fishing in 2004-05	34
Appendix 3 Licensed international visiting anglers by country from 1989-99 to 2004-05	37
FINANCIAL REPORT FOR 2004-05	39

OVERVIEW

DIRECTOR'S HIGHLIGHTS OF THE YEAR

The official opening of the 2004-05 trout season, was held at Lake Crescent on Saturday 7 August, one week later than the traditional opening date. This was changed under regulations to align the angling season with the start of the new licence period.

Lake Crescent had been closed for nearly a decade since the discovery of carp in 1995. Its reopening to recreational anglers this year was a highlight that marked a series of successes for the Service over the ensuing 12 months. Many of these were pay-offs for previous planning and hard work by the Service, and the positive feedback encouraged a continued concentrated effort by staff throughout the year.

The reopening of Lake Crescent was made possible due to the culmination of successful work of the carp program over the past nine years, and its continued outstanding success this year. Carp have been contained to lakes Crescent and Sorell, and the numbers remaining are at a sufficiently low level to permit fishing access by recreational anglers at both waters.

The Service continued to stock Lake Crescent with trout over the past five years, and specifically, in preparation for its reopening this season. It was rewarding that anglers caught good quality brown trout in the 3-4 kg range on the opening morning in front of a gallery of media and the official opening party.

As the season progressed, Lake Crescent produced trophy sized-trout for which it was previously renowned. Monitoring by the Service showed evidence of fast growth rates of fish previously stocked in the lake, demonstrating its potential to regain a high priority fishery status in the future.

It is also pleasing to report that anglers showed consideration of the needs of the Service in relation to the carp management program at Lake Crescent throughout the season. In particular, the specific regulations, which were introduced late last year to protect newly installed fish barriers and traps, were adhered to, enabling this water to remain open for next season.

A major success this year, was the 13 per cent increase in recreational fishing licence sales, indicating improved performance across a range of outputs. The total number of licence sales was 26,805 compared with 23,710 last season. The statistics demonstrate a significant upward turn in licence sales over the past two years, which goes against a national trend away from angling in inland waters towards marine fishing.

The Service released its Corporate Plan, which directed activities towards core business priorities and focused on financial outcomes. Under this new direction, the Service sought ways of improving licensing administration, sales and distribution as part of the Licensing Review Project. Closer relations with the tackle industry and *Service Tasmania* resulted, allowing improvements in the payment process at both private agents (fishing tackle stores) and *Service Tasmania* shops. Diligent work to improve the accuracy of the Service's Licence database was carried out prior to the mail-out of renewals.

With a stronger customer and business focus, the Service proposed a list of changes to the angling licence, which aimed to improve the product and satisfy both local anglers and tourists. Representatives from the fishing tackle industry and angling associations were consulted, and several proposals were developed for introduction in the 2005-06 season. These include an extension of the period of short term licences, with no increase in fee, giving anglers more fishing value for the same licence price. The 14 Day licence was extended to one month, the 3 Day licence to one week, and the 1 Day licence to a full 24 hour period.

A significant contributing factor to the overall success of the fishery this year, has been the Service's commitment to improving angler satisfaction through an enhanced stocking regime begun nearly two years ago. The Service continued with this initiative, focusing on the large scale stocking of adult fish into priority waters close to major population centres, as well as increased stocking into previously under-performing waters.

During the year, the Service distributed approximately 294,000 brown trout into public waters throughout the State. The number of rainbow trout stocked increased dramatically with 222,820 released into 29 different waters, and 103,160 brook trout and 5,490 Atlantic salmon were added to diversify some of the more popular fisheries.

Annual stockings by the Service are dependent on the number of fish successfully raised at the Salmon Ponds as well as on domestic fish stocks donated by various commercial hatcheries such as Springfield Fisheries, Sevrup, Saltas, Tassal and Snowy Range.

The enhanced stocking regime this year, as with the previous year, was made possible by the increased assistance of the State's commercial hatcheries. The Service is grateful for the generous support of the fishing industry in the stocking of the Tasmanian Trout Fishery.

For instance, a total of 217,990 rainbow trout, 48,160 brook trout and 5,490 Atlantic salmon were sourced directly from commercial fish farms this year. Saltas also contributed with the growing out of 67,150 brown trout to fry and fingerling stages, before their distribution to public waters. These stock were of larger average size than can be produced at the Salmon Ponds presently, and have an increased ability to survive in the wild. Hence, such stockings benefit anglers through improved catch rates and assist the Service in enhancing the trout fisheries at various waters around the State.

Under the Fishery Performance Assessment program this year, the Service focused a major effort at Great Lake following the implementation of various recommendations of the *Great Lake Fishery Management Plan*, which was released last year. Fishery performance reports were also completed for Bronte Lagoon and Tooms Lake.

According to creel data collected by enforcement officers this year, the greatest number of anglers were interviewed at Arthurs Lake, Craigbourne Dam, Great Lake, Tooms Lake, Bradys Lake and Brushy Lagoon. A total of 3,200 anglers were checked by officers at 111 separate waters during the season, and 2,854 fish were caught by those participating in the survey. This gives an indicative measure of the average catch rate of over one fish per angler per day at Tasmanian inland waters.

In native fish management, the preparation of a draft *Whitebait Management Plan* was begun, the *Giant Freshwater Lobster Recovery Plan* was released for public comment, and the *Threatened Tasmanian Galaxiid Recovery Plan 2005-2009* was submitted for final consideration by the State and Commonwealth governments.

Finally, a small but worthy project was undertaken with funding from State and Commonwealth government agencies and Greening Australia, to protect important wetland habitat adjacent to Lake Crescent. This involved the installation of 8 km of fencing to prevent future grazing on the sensitive wetland habitat of Clyde Marsh, with labour supplied by the Service, the adjacent landowner and volunteers. This project demonstrates the genuine commitment by government and the angling community, in working together to advance the Tasmanian Trout Fishery and to contribute to environmental outcomes in inland waters.



John Diggle
Director of Inland Fisheries

NEW LEGISLATION

The following new legislation was introduced during the year.

- *Inland Fisheries (Recreational Fishing) Amendment Regulations 2005* was introduced to amend the principal legislation by revising the schedule of fees for angling licences. This was required after the decision by the Director to extend the duration of each of the three short term licences. This decision was made after a period of consultation with representatives of the angling community, and the tourism and fishing industries. The regulation enabled the 14 Day Licence to be extended by 14 days to a 28 Day Licence, the 3 Day Licence to be extended by four days to a 7 Day Licence and the 1 Day Licence to be extended to a full 24 Hour Licence.
- *Inland Fisheries (Recreational Fishing) Amendment Regulations 2004* was introduced to amend several regulations, including the correction of a reference to Curries River 'Reservoir' instead of the common nomenclature of 'Dam' while another related to the taking of fish from inland waters, and was needed to clarify a definition regarding the use of nets.

Another amendment under these regulations sought the omission of the definition of "mud eye" from the principal legislation. This was required after a determination by the Crown Solicitor that mudeyes are not strictly defined as 'fish' under the *Inland Fisheries Act 1995*, and are not, therefore, the management responsibility of the Inland Fisheries Service. This resulted in an end to the Service's management role in the commercial licensing for the State's mudeye industry.

A further amendment was made in response to a request by anglers to allow trolling from a boat powered by an electric motor at Lake Leake. The previous regulation prohibited trolling at the lake except from a boat propelled by oars.

- *Inland Fisheries (Commercial Nets and Fees) Amendment Regulations 2004* was introduced to amend the schedule of fees in relation to exemption permits and included the application for permission to transport live fish. The latter was added to the schedule in keeping with the Service's policy to better regulate the movement of live fish around the State, thereby reducing the risk of unwanted species being introduced into high conservation waters.
- *Inland Fisheries (Seasons and Waters) Amendment Order 2004* was introduced to cover several requirements, including the change of the traditional start date of the angling season (based on the opening of most brown trout waters around the State) to the first Saturday of August each year. This was required to align the opening weekend with the start of the new licence period on the 1st of August.

Another amendment under these regulations was required to prohibit the taking of fish from Curries River Reservoir within 400 m of the dam tower in order to satisfy the needs of Esk Water in its management of potable water. In making this amendment, the Service was able to negotiate an agreement with Esk Water to maintain future access to the water by recreational anglers.

A further amendment was made governing the taking of acclimatised fish from Canal Bay in Great Lake, which specifies that trout may be taken from Canal Bay between the Saturday nearest 1 December in any year and the Sunday nearest 31 March in the next year. This requirement arose from a recommendation within the Great Lake Fishery Management Plan, which specified that Canal Bay should be closed to fishing from April to November to protect spawning rainbow and brown trout.

INLAND FISHERIES ADVISORY COUNCIL

The Inland Fisheries Advisory Council (IFAC) was formally established in 2000 under the *Inland Fisheries Act 1995*. Its principal role is to advise the Minister on inland fisheries issues, provide a forum for consultation, promote understanding and acceptance of the functions of the Director of Inland Fisheries, encourage community support for fisheries management activities and to review management plans for inland fisheries.

During the year, IFAC advised the Minister on a range of issues significant to the management of inland fisheries. Senior officers of the Service were required to attend the IFAC meetings for specialist advice on issues and the Service also continued to provide administrative support. The Council met five times during the year.

IFAC is currently made up of thirteen members appointed by the Minister, representing various segments of the industry and the recreational fishery. Table 1, below lists the IFAC members who were appointed for a two-year term commencing 1 December 2004.

Name	Membership representation/role
Jason Garrett	Chairperson
Veronica Sakell	Ministerial appointment
Doug Shirkey	Ministerial appointment
Dr Helen Locher	Ministerial appointment
Ashley Artis	Ministerial appointment
Gordon Goudie	Representing freshwater commercial fisheries
Louis Molnar	Representing freshwater angling associations
Richard Dax	Representing tourism interests
Kerri Lynch	Representing conservation interests
Louisa Fitzpatrick	Licensed angler representing the North
Peter Maloney	Licensed angler representing the North West
Neil Morrow	Licensed angler representing the South
John Diggle	Director of Inland Fisheries

Table 1 Members of the Inland Fisheries Advisory Council in 2004-05

CORPORATE PLAN

Vision

For Tasmania to have sustainable inland fisheries of a world class standard.

Mission

To manage Tasmania's inland fisheries for the benefit of anglers and the Tasmanian community.

Strategic Outcomes

1. To maintain a financially viable business.
2. To excel in fisheries management.
3. To apply exceptional corporate governance.
4. To maintain a strong customer focus.
5. To adopt contemporary human resource management practices.
6. To manage our main undertakings and other assets on a commercial basis.

Goals

1. To re-implement the finance system so that it meets the needs of the Service from both financial reporting and management perspective's.
2. To review the assets held by the Service on a commercial basis with the intent of rationalising those that do not meet the criteria of being necessary for core business or cannot be justified when applying cost benefit principles or considering other alternatives.
3. To formalise corporate management and adopt corporate governance practices as far as applicable in line with the Corporate Governance Handbook for Government Business Enterprises published by the Department of Treasury and Finance.
4. To report to the Minister for Primary Industries and Water on a quarterly basis with reporting as undertaken by Government Business Enterprises.
5. To implement fisheries management practices that improve fisheries performance and increase fisheries diversity in the product we are providing.
6. Develop close relationships with commercial hatcheries concerning supplies of fish.
7. Develop, document and proceed with a stocking program that complements the fisheries management program.
8. To enter into water management level agreements that complement fisheries management plans.
9. Enhance fisheries protection through enforcement programs, monitoring and eradication of pest species and the monitoring of the aquarium industry.
10. To consider and participate in improvement of access to key waters where we have the financial capacity to do so.
11. To apply marketing principles and a customer orientation in our dealings with all stakeholders.
12. To adopt standards of excellence in the presentation of our facilities, the work we do and ourselves to the public at large.
13. To restructure the IFS to prepare it for the challenges that lie ahead and align its structure to the directions being taken.
14. To communicate the organisational directions with staff and introduce accountability requirements.
15. To develop consultative and communicative arrangements with other aligned organisations such as Marine and Safety Tasmania, Hydro Tasmania, Parks and Wildlife Service and Tourism Tasmania.

LEGISLATIVE FUNCTIONS AND RESPONSIBILITIES

Core Functions

The *Inland Fisheries Act 1995* creates the position of the Director of Inland Fisheries and provides that the Director is a corporation, responsible for the following functions:

- to manage, control, protect, develop, improve, maintain and regulate salmon fisheries, fisheries in inland waters and freshwater fish;
- to stock inland waters with fish;
- to create, improve and maintain access to inland waters;
- to provide facilities in respect of access to inland waters;
- to carry out research and investigation into matters relating to salmon fisheries and fisheries in inland waters; and
- to collect, publish and disseminate information relating to freshwater fish and inland waters.

Legislative Responsibilities

The Service has primary responsibility for implementing the *Inland Fisheries Act 1995* and the following subordinate legislation:

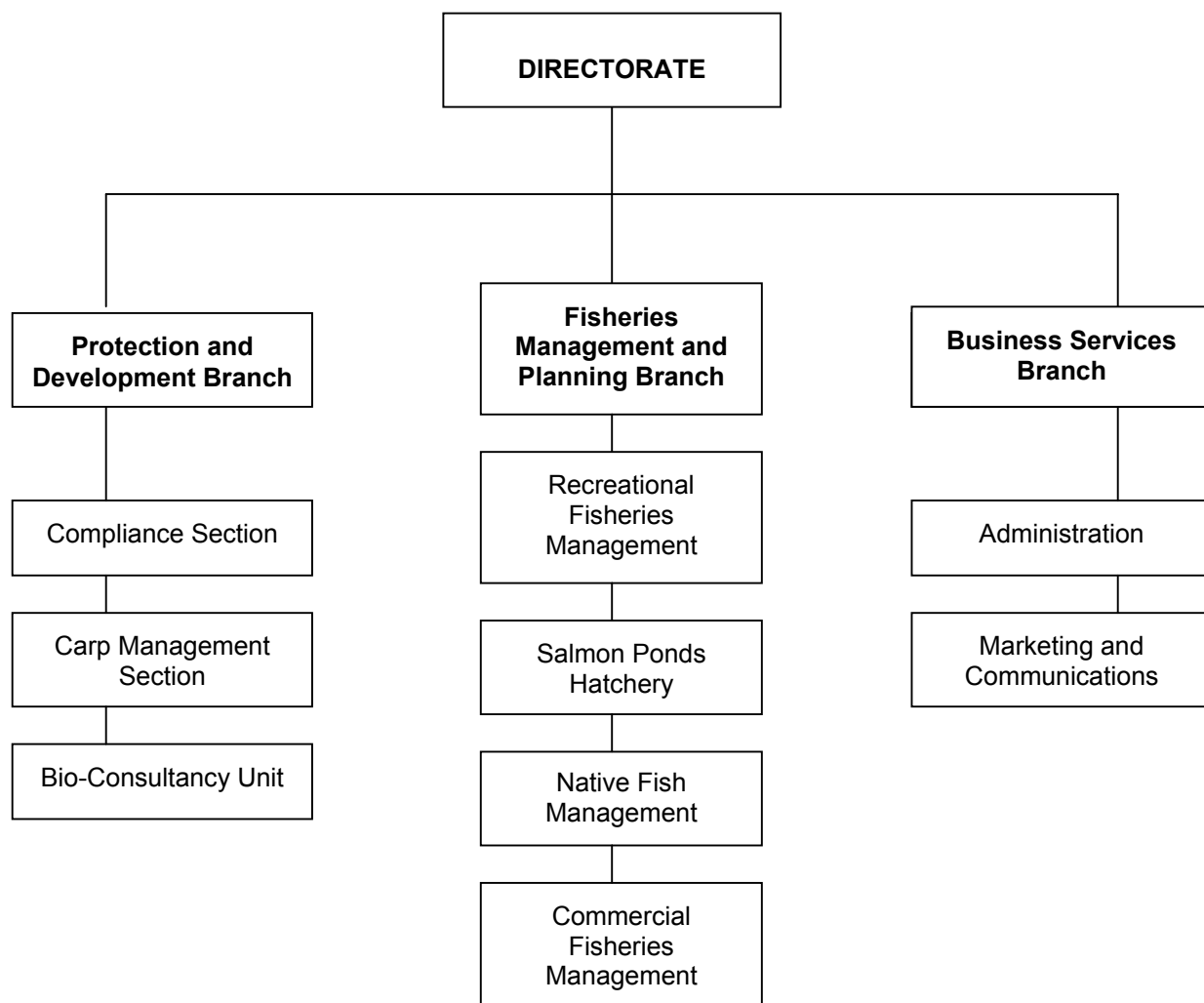
- *Inland Fisheries (Applicable Fish) Order 1996*
- *Inland Fisheries (Controlled Fish) Order 1996*
- *Inland Fisheries (Declared Fish) Order 1996*
- *Inland Fisheries (Destruction of Controlled Fish) Order 1996*
- *Inland Fisheries (Districts) Order 1996*
- *Inland Fisheries (Excepted Waters) Order 1996*
- *Inland Fisheries (Protected Fish) Order 1996*
- *Inland Fisheries (Seasons and Waters) Order 1996*
- *Inland Fisheries (Seaward Limits) Order 1996*
- *Inland Fisheries (Inland Waters) Order 1997*
- *Inland Fisheries (Protected Fish) Order 1997*
- *Inland Fisheries (Commercial Nets and Fees) Regulations 1999*
- *Inland Fisheries (Recreational Fishing) Regulations 1999*
- *Inland Fisheries (Delay or Prevention of Spread of Controlled Fish) Order 2003*

ORGANISATIONAL STRUCTURE AND CONTACTS

Management Structure

The Director is the Head of Agency for purposes of the *Financial Management and Audit Act 1990*. The Service receives specific corporate support from the Department of Primary Industries, Water and Environment (DPIWE). The Secretary of DPIWE, is the Head of Agency for purposes of the *State Service Act 2000*. The Service is comprised of the Directorate and three branches, managed by the Manager, Business Services Branch, Principal Fisheries Manager, Fisheries Management and Planning Branch and Principal Fisheries Manager, Protection and Development Branch.

Organisational Chart



Primary Contacts

Inland Fisheries Service

Head Office: 6B Lampton Avenue, Derwent Park, HOBART, 7009
 Reception phone: 6233 4140; Fax 6233 4141
 Email address: infish@ifs.tas.gov.au
 Website: www.ifs.tas.gov.au
 Phone: 1300 463 474
 Liawenee Field Station: Phone 6259 8166; Fax 6259 8028
 Lake Crescent Field Station: Phone 6254 0058; Fax 6254 0058
 Salmon Ponds Hatchery: Phone 6261 2583; Fax 6261 4485

OUTPUT GROUP 1 RECREATIONAL FISHERIES MANAGEMENT

FOCUS

The Fisheries Management and Planning Branch and the Business Services Branch deliver Output Group 1. It covers the management of the State's freshwater recreational fishery, encompassing the development of recreational fishing policy, fishery management plans and fishing regulations, and the monitoring, assessment and research of recreational fisheries. Other major activities include the breeding and raising of trout, the stocking of inland waters and the development and coordination of infrastructure to support inland fisheries. It also includes the management, administration, distribution, promotion and sale of recreational licences, and the provision of information, advice and advocacy.

OUTPUT 1.1 FISHERIES MANAGEMENT PLANNING

OBJECTIVES

- To provide a structured approach for the management of fisheries in the medium to long term.
- To engage stakeholders in the development of fisheries policy, planning and management.

ACHIEVEMENTS IN 2004-05

Western Lakes Fishery Management Plan

Implementation of the Western Lakes Fishery Management Plan continued during 2004-05. Stocking was completed for all waters identified in the plan. In addition, assistance and advice was provided in relation to further track work undertaken by the Parks and Wildlife Service at lakes Pillans and Julians, and hydrocarbon monitoring by the Department of Primary Industries, Water and Environment.

Great Lake Fishery Management Plan

Implementation of the Great Lake plan continued during 2004-05. The stocking of 45,000 advanced wild strain rainbow trout from the Saltas hatchery was carried out in March 2005.

Major works were undertaken to reinstate the fish anti-jump structure in the lower section of Liawenee Canal. A total of 11,325 adult brown trout were transferred from Liawenee Canal to other public waters of the State. This fulfils the Service's objective to balance the trout biomass at Great Lake with the stocking of advanced fish into various waters to meet the commitments under the Corporate Plan. The Service also had input into the upgrading of boat ramps at Great Lake.

Other Waters

Development of the fishery management plan for Lagoon of Islands was postponed due to uncertainty regarding the long term environmental health of this fishery. Work on the plan will not begin again until studies on the water by the University of Tasmania/Hydro Tasmania have been completed.

Work on the draft fishery management plan for Penstock Lagoon continued and an interim management strategy was prepared and implemented for the opening of Lake Crescent during the 2004-05 season.

PLANS FOR 2005-06

- Completion of the Fishery Management Plan for Penstock Lagoon with the release of the draft plan for public comment in 2005.
- Initiation and development of a State Inland Recreational Fisheries Management Plan.

OUTPUT 1.2 FISHERIES DEVELOPMENT AND ASSESSMENT

OBJECTIVES

- To provide a systematic approach for assessing and reporting on the performance of priority fisheries.
- To expand the baseline data of the State's recreational trout fishery.
- To develop a strategic approach to fisheries management and optimise recreational fisheries.
- To increase revenue from recreational angling licences.

ACHIEVEMENTS IN 2004-05

Fishery Performance Assessment

A number of fisheries around the State were surveyed under the Fishery Performance Assessment (FPA) program. As well as the information collected on specific trout populations, the FPA program combines creel data collected by enforcement officers, survey information from the annual postal survey, and individual stocking histories, in order to measure the performance of priority waters.

During the past season, a major effort went into surveying the brown trout population at Great Lake. This involved the sampling of fish from several habitats around the lake. Fishery performance technical reports were completed for Bronte Lagoon and Tooms Lake, and summary reports were made available on the Service's website.

Management

The spawning runs at Great Lake (rainbow and brown trout), Lake Sorell and Arthurs Lake (brown trout) were monitored, and a sample of two hundred fish from each run were weighed and measured.

The annual angler postal survey continued. A total of 3,911 questionnaire forms were sent to a sample of Tasmanian and interstate licence holders and the reply rate was approximately 22% this year, which is less than that of the previous season (27%).

Angler Creel Surveys

Inland fisheries inspectors continued to collect catch data as part of their normal routine licence checking during the 2004-05 angling season. Inspectors checked over 3,200 anglers for a total of 4,070 angler days, at 111 different waters throughout the State. The greatest number of anglers was checked at Arthurs Lake (875), Craigbourne (349), Great Lake (245), Tooms Lake (201), Bradys Lake (176) and Brushy Lagoon (151). Of those interviewed 31% were bait fishing, 26% fly fishing, 23% trolling and 20% spinning.

A total of 2,854 fish were caught by anglers participating in the survey, 2,100 (74%) of which were brown trout, 421 (15%) rainbow trout, 168 (6%) Atlantic salmon and 165 (6%) brook trout. Of these, 229 fish, which were below the legal minimum size and 180 of takeable size, were released.

Recreational Fisheries Forum

The Service continued to hold quarterly Recreational Fisheries Forum meetings. The forum provides a constructive mechanism for both the Service and angling organisations to discuss recreational fishery management issues. Last financial year, representatives from all angling associations and the trout guides attended meetings.

Tagging Studies

During June 2004, the Service released 730 adult brown trout, weighing approximately 1 kg, into the Mersey River. They were taken from the spawning run at Great Lake with each fish being individually tagged. For the releases, 380 were put in at Union Bridge and 350 released further downstream at Latrobe.

One hundred tags were returned to the Service during the 2004-05 season. Of the fish released at Union Bridge, 16 were captured in the area from Merseylea to Liena, seven at Latrobe and one from the Forth River. Five more fish were reported as being captured but no capture location was recorded. Of the fish released at Latrobe, 66 were caught in the area from Latrobe to the lower estuary, two from unrecorded locations and three from the Forth River.

Communication and Liaison

The Service continued to provide information specifically to anglers through its monthly bulletin, *Angler News*, which is designed for electronic distribution. Staff also presented talks at angling club meetings, attended the Service's annual Open Weekend at Liawenee, and continued to maintain the Service's website.

Fish Salvages

During 2004-05, the Service carried out a small salvage of stranded fish from Liawenee Canal following a schedule shut down by Hydro Tasmania for maintenance purposes. A further 450 brown trout were salvaged from the area immediately downstream from the dam at Laughing Jack Lagoon.

PLANS FOR 2005-06

- Further assessments under the FPA program, with a major survey scheduled for Great Lake.
- Continuation of the annual spawner monitoring program, specifically at Great Lake, Lake Sorell and Arthurs Lake.
- Refurbishment of the fish trapping facilities and roading at the Liawenee Field Station.
- Continuation of the delivery of communication activities, including presentations and publications.
- Continuation of the Recreational Fisheries Forum.

OUTPUT 1.3 SALMON PONDS HATCHERY PRODUCTION

OBJECTIVES

- To collect, rear and raise trout for stocking into inland waters.
- To provide appropriate stock for Tasmanian recreational fisheries.
- To supply fish stocks for the Salmon Ponds tourist operation.

ACHIEVEMENTS IN 2004-05

Ova Collection

The Service collected 1,000,000 brown trout ova and 250,000 rainbow trout ova from the wild, at Liawenee, Great Lake. A further 55,000 brook trout ova were collected from the Salmon Ponds hatchery.

Grow Out

The Service grows trout to various age classes for stocking into the State's inland waters to support the recreational fishery. The Service also produces novelty trout such as albino (rainbow trout) and tiger trout (a brook/brown trout hybrid) for public display at the Salmon Ponds. The age class of specific stocks, whether fry, advanced fry, fingerlings, yearlings and adult, is predetermined depending upon the water in which the stock are to be released. Total production from the Salmon Ponds is contained in Table 2, below.

Age class	Brown trout	Rainbow trout	Brook trout
Fry	197,600		25,000
Advanced Fry	22,000		30,000
Fingerlings		1,500	
Yearling		2,700	
Adult		330	
Total	219,600	4,530	55,000

Table 2 Fish stock number, species and age class production at the Salmon Ponds in 2004-05

Sale

During the year, the Service sold 130,000 brown trout ova to the South Australian Fly Fishers and 56,000 brown trout fry to private fisheries within the State.

PLANS FOR 2005-06

The Service will collect approximately 800,000 wild brown trout ova and 600,000 wild rainbow trout ova for the stocking of public waters next year.

OUTPUT 1.4 STOCKING OF INLAND WATERS

OBJECTIVES

- To manage the stocking of inland waters.
- To maximise recreational fisheries performance.

ACHIEVEMENTS IN 2004-05

Stocking of Inland Waters for Public Fishing

The Service generates a proposed stocking list each year, based on historical stocking levels, fisheries performance assessments and management goals, to identify stocking requirements in regard to the species, number and size of fish to be stocked in each water.

The ability of the Service to fulfil this proposed stocking list is dependent upon the number of fish successfully raised at the Salmon Ponds as well as on domestic fish stocks donated by various commercial hatcheries such as Springfield Fisheries, Sevrup, Saltas and Snowy Range. This year, Saltas trialed the raising of wild stock rainbow and brown trout, which enabled the Service to stock larger sized wild fish, particularly rainbow trout, than in previous years.

During 2004-05, the Service distributed approximately 222,820 rainbow trout, 294,000 brown trout, 103,160 brook trout and 5,490 Atlantic salmon into public waters. These fish were variously sourced from the Salmon Ponds hatchery and commercial hatchery operations within the State. For instance, a total of 217,990 rainbow trout, 48,160 brook trout and 5,490 Atlantic salmon were sourced directly from commercial fish farms.

Saltas also contributed with the growing out of 67,150 brown trout to fry and fingerling size before their distribution to public waters. These stock were of a larger size than the Service could rear at the Salmon Ponds at present. This gives them an increased ability to survive in the wild, rapidly increasing the number of catchable fish in areas where they are stocked.

A detailed listing of public waters stocked by the Service during the year is contained in Appendix 1. A summary of fish species and age details, is displayed in Table 3 below.

Age class	Brown trout	Rainbow trout	Brook trout	Atlantic salmon
Fry	236,100		25,000	
Adanced fry	22,000	53,100	36,250	
Fingerling	28,500	153,700	18,500	
Yearling		14,550	23,000	
Adult	7,435	1,470	410	5,492
Total	294,035	222,820	103,160	5,492

Table 3 Fish stock number, species and age class for the stocking for public fishing in 2004-05

Stocking of Private Farm Dams for Public Fishing

The Service provides brown and rainbow trout stocks for dams on private property where there is an agreement signed by the landholder enabling public access by anglers. In most cases, access to the dam is negotiated through local angling clubs. During the year, the Service, Springfield Fisheries and Sevrup Fisheries Pty Ltd, supplied adult rainbow trout to six waters, in preparation for the Inland Fisheries Service *Free Fishing Day*.

Fish stocks for dams on private land in the north of the State are supplied by the North Motton Rearing Unit, with fish stocks sourced from the Salmon Ponds. During the year, the Service supplied the North Motton Rearing Unit with brown and rainbow fry for further grow-out and distribution. This year, the Penguin, Devonport and Ulverstone branches of the North West Fisheries Association distributed 60,550 brown trout fry and 19,030 rainbow trout fry into farm dams in the north west of the state. Details of these stockings are provided in Appendix 2.

Private Fisheries

During the year, the Service sold 4,070 adult brown trout harvested from the Liawenee Canal, Great Lake, to private fisheries within the State.

Stocking of Farm Dams for Private Fishing

The Service manages the stocking of farm dams for private fishing (with rainbow trout only) through the issuing of a permit. Rainbow trout stocks are supplied either by private hatcheries or the Salmon Ponds. During the year, the Service approved the stocking of a total of 37,122 rainbow trout into 111 private farm dams located throughout the State.

PLANS FOR 2005-06

- Continued stocking of private and public waters for public fishing.
- Continued processing of applications for the stocking of waters for private fishing.

OUTPUT 1.5 LICENSING OF RECREATIONAL FISHING

OBJECTIVES

- To provide an efficient and cost-effective method of licensing recreational fishers.
- To satisfy customers in the design of the licence product, categories and fees.
- To partner stakeholders in the distribution and sale of licences.
- To provide accurate and up to date records and reports on licence sales.
- To collect information and investigate the angling market.

ACHIEVEMENTS IN 2004-05

Licence Distribution by Renewal Forms

The Service continued the trial of licence renewals for a third year. As with the previous year, this involved the direct mail of an integrated licence renewal form with a laminated peel-off licence card attached. Individually printed renewal forms were sent to 19,105 annual licence holders. The bulk of these were mailed out in early July for licences due to expire on 31 July or during the month of August. The remainder were sent in August or September, capturing licences not due to expire until later in 2004.

The timing of the mail-out of the forms varied from the previous year due to the change in expiry date of the licence period resulting from the conversion back to a 'fixed term' full season licence period. The previous 'rolling' annual licence (valid for 12 months from the date of purchase) had been trialed for one year and was ended after consultation with stakeholders and advice from the Inland Fisheries Advisory Council.

After consultation with licence holders and representative tackle agents, improvements were made to the licence card increasing its durability and usefulness. The Service also redesigned the licence books and forms to include private tackle agents in the payment process for licence renewals, extending the options for payment compared with last year. The other options for payment of renewals included payment in person at *Service Tasmania* shops, electronic transactions by phone and internet, and direct payment to the IFS by post or in person.

Of the total number of annual licence holders who were sent a renewal form, 10,110 anglers renewed their annual licence through one of the payment methods available. This represents a take-up rate of 53% for renewals, which is a marked increase on the two previous years of 28% and 32%, for 2002-03 and 2003-04, respectively. A breakdown of angler preference for the various methods of payment for renewals is displayed in Table 4, below.

Payment Method	Number	%
Service Tasmania	5,205	51.5
Phone/Internet	3,179	31.4
Private Agents	1,503	14.9
IFS	223	2.2
Total	10,110	100.0

Table 4 Licence holder preference for renewal payment methods in 2004-05

Distribution of New Licences

Traditional paper licences continued to be sold through private licence selling agents as well as all *Service Tasmania* shops throughout the State. The total number of new licences sold, including short term licences, was 16,293. A breakdown of licence holder preference for the various methods of payment for new licences is displayed in Table 5, below.

Payment Method	Number	%
Private Agents	13,146	80.7
<i>Service Tasmania</i>	3,051	18.7
IFS	96	0.6
Total	16,293	100.0

Table 5 Licence holder preference for new licence payment methods in 2004-05

As a result of a joint project undertaken with the *Service Tasmania* Unit, Department of Premier and Cabinet, the process of licence sales through *Service Tasmania* shops was reviewed and simplified. A licence application form, designed for completion by the customer rather than the customer service operator, was developed to replace the traditional licence forms and books in all *Service Tasmania* shops. Options for future improvement to the licensing system through *Service Tasmania* shops using web services technology, were investigated. Further work to develop an internet licensing option through *FishOnLine*, was postponed until alternative options have been discussed with the Corporate Information Technology Branch, Department of Primary Industries, Water and Environment.

Licence Fees

There was no significant price increase in licence fees again this year. Licence fees were raised only in accordance with the Government Fee Unit, which reflects the Consumer Price Index, and rounded down to the nearest five cents. Table 6 shows the price and categories of the Angling Licence for 2004-05 compared with the price over the previous three years.

Licence type	2001-02	2002-03	2003-04	2004-05
Adult Licence	\$49.98	\$52.90	\$54.35	\$55.85
Juvenile Licence	\$10.20	\$10.80	\$11.10	\$11.40
Pensioner Licence	\$27.54	\$29.15	\$29.95	\$30.75
Seniors Licence	\$39.78	\$42.10	\$43.25	\$44.45
14 Day Licence	\$39.78	\$42.10	\$43.25	\$44.45
3 Day Licence	\$25.50	\$27.00	\$27.75	\$28.50
1 Day Licence	\$15.30	\$16.20	\$16.65	\$17.10
1 extra rod – adult	\$10.20	\$10.80	\$11.10	\$11.40
1 extra rod – other	\$5.10	\$5.40	\$5.55	\$5.70

Table 6 Tasmanian angling licence fees and structure for the past four years

Licence Sales

The total number of licences sold this year was 26,805, which is an increase of 13% compared with the number reported last year. Finance data shows that the total revenue from angling licence sales was \$1,264,366 compared with \$1,147,340 in 2003-04 (refer Financial Report, page 38). The actual number of licences sold differs from the total revenue received due to the difference in timing of the financial year report and accounting for the angling season.

The breakdown of licences sold per category of licence for 2004-05 compared with the previous three years, is shown in Table 7 on the next page.

This indicates that the greatest percentage increase this year was in the Senior licence category, with 128 more Senior licence holders (19%) compared with the previous year. The number of Adult licence holders increased by 1,903 (15.6%), Pensioners by 570 (11.7%) and Juvenile licence holders by 116 (10.4%). Amongst the short term licence holders, there was only a small increase of four anglers taking out a 14 Day licence compared with last year, while 170 more anglers took out a 3 Day licence (9.4%) and 205 more purchased a 1 Day licence (15.1%).

Categories	2001-02	2002-03	2003-04	2004-05
Adult Licence	13,073	12,121	12,166	14,068
Juvenile Licence	1,394	1,100	1,115	1,231
Pensioner Licence	4,910	4,613	4,891	5,461
Seniors Licence	615	657	675	803
14 Day Licence	1,771	1,372	1,703	1,707
3 Day Licence	1,851	1,459	1,806	1,976
1Day Licence	1,593	1,224	1,354	1,559
Total licences sold	25,207	22,546	23,710	26,805
Extra rod - adult	4,842	4,758	4,755	5,573
Extra rod - other	3,265	3,116	3,348	3,947

Table 7 Number of angling licences sold per category over the past four years

The number of licences sold interstate and overseas over the past four years is compared in Table 8, below. This shows that the greatest number of interstate licence holders came from Victoria again this year. In fact, Victorian anglers purchased a total of 2,733, which equates to 10% of the total number of licences sold by the Service. This was followed by visiting NSW anglers who purchased 1,300 licences, representing nearly 5% of the total number.

Angler Origin	2001-02	2002-03	2003-04	2004-05
ACT	132	109	116	160
NSW	941	923	1,086	1,300
NT	40	39	56	38
QLD	381	392	515	614
SA	231	200	235	281
VIC	2,279	2,169	2,362	2,733
WA	243	218	243	220
TAS	20,474	18,099	18,689	21,048
International	486	387	408	411
Unknown	-	11	-	-
Total	25,207	22,547	23,710	26,805

Table 8 Number of angling licences sold interstate and overseas over the past four years

The breakdown in the categories of licences interstate and overseas (OS) is shown in Table 9, below. A full distribution of licences sold by country is attached in Appendix 3.

		ACT	NSW	NT	QLD	SA	Vic	WA	Tas	OS	Total
Full Season	Ad	40	253	9	112	53	668	35	12,857	42	14,068
	Juv	1	27	0	12	6	54	7	1,118	6	1,231
	Pen	4	117	3	94	27	181	21	5,012	2	5,461
	Sen	12	70	1	37	5	109	13	553	3	803
	Total	57	467	13	255	91	1,012	76	19,540	53	21,563
Short term	14 Day	46	351	15	135	76	826	64	80	113	1,707
	3 Day	33	268	5	98	67	662	37	692	112	1,976
	1 Day	24	210	5	125	47	231	38	742	122	1,559
	Total	103	829	25	358	190	1,719	139	1,514	347	5,242
Total	160	1,296	38	613	281	2,731	215	21,054	400	26,805	

Table 9 Number of angling licences sold per category interstate and overseas in 2004-05

In regard to the breakdown of short and long term licences, a majority of Tasmanian anglers (80%) purchased full season licences during the year. A relatively high proportion of Victorians (37%) and NSW anglers (36%) also purchased full season licences. In comparison, the majority of international anglers (87%) preferred to buy a short term licence whilst fishing in Tasmania.

Licence Review Project

Under the Licence Review Project, which commenced in January 2004, the Service developed an Angling Licence Marketing Plan. The primary aims were to increase revenue from licence sales while reducing administration costs, as well as satisfying customers in the design of the licence product, categories and fees, and partnering stakeholders in the distribution and sale of licences. It also sought to establish accurate and up to date records on licence sales and information on the angling market.

Actions from the marketing plan focused on requirements for the 2005-06 season including improving the accuracy of the Service's Licence database for the renewal process and improving the design of the renewal form and licence card. As previously mentioned, the business rules and system used for licence sales through *Service Tasmania* shops, were reviewed, resulting in the design of a licence application form to replace the traditional licence books in *Service Tasmania* shops. Continuing consultation with the private licence selling agents and the tackle industry, resulted in improvements to the payment of both renewals and new licences through private licence selling agents (ie major fishing tackle stores).

The Service also proposed a list of changes to the licence categories, which were discussed with representatives from the tackle industry and angling associations. As a result of this consultation, changes were made to the licence categories for introduction in the 2005-06 season. These included an extension of the period of short term licences, so that the 14 Day licence was extended to one month, the 3 Day licence to one week and the 1 Day licence to a full 24 hour period.

Whitebait Licences

The total number of whitebait licences sold in 2004-05 was 761, which indicates an increase of 34% compared with 563 licences sold last season. The cost of a whitebait licence was \$22.80 this year and the revenue from whitebait licence sales was \$17,350.80. The season, which is one month duration, was set for October again this year to avoid the early spring floods, giving anglers an increased opportunity to take whitebait and to protect the vulnerable *Lovettia sealli*, Tasmanian whitebait.

PLANS FOR 2005-06

- Continued assessment and enhancement of the delivery and payment of licences.
- Development of electronic methods of licence sales.
- Continued development of partnership with the tackle industry.
- Continued investigation of the angling market and consultation with customers.

OUTPUT GROUP 2 NATIVE FISH MANAGEMENT

FOCUS

Output Group 2 is delivered by the Fisheries Management and Planning Branch. It covers the conservation and management of all native freshwater fish and certain invertebrates, including all of Tasmania's 25 species of native freshwater fish, 12 of which are endemic to Tasmania. Several of these endemic species of galaxiids are confined to highland lakes, namely the golden galaxias (lakes Sorell and Crescent), saddled galaxias, Arthurs paragalaxias (Woods and Arthurs lakes only) and the Great Lake paragalaxias (Great Lake, Shannon and Penstock lagoons). In addition, there are several other species that migrate between fresh and salt water at different stages of their life cycle, and are usually widespread at least in coastal streams. There are 12 fish listed on the State's threatened species legislation and eight fish recognised by Commonwealth legislation. All these fish with the exception of the Australian grayling, are galaxiids.

OUTPUT 2.1 TASMANIAN GALAXIAS RECOVERY PROGRAM

OBJECTIVES

- To improve the conservation status of Tasmania's 12 threatened freshwater fish species.
- To implement the galaxiid recovery plan.

ACHIEVEMENTS IN 2004-05

This year, the Arthurs paragalaxias (*Paragalaxias mesotes*) and the golden galaxias (*Galaxias auratus*) were nominated and accepted for listing under the *Environment Protection and Biodiversity Conservation Act 1999* (Commonwealth) as 'Endangered' while the Pedder galaxias (*Galaxias pedderensis*) was listed as 'Extinct in the wild'.

Two new populations of the Swan galaxias (*Galaxias fontanus*) were confirmed outside their previously known distribution area.

A successful funding application was submitted in collaboration with the Threatened Species Unit, DPIWE to provide funding for work on the five nationally threatened freshwater galaxias species as detailed in the galaxiid recovery plan. Monitoring of these species included a survey of the Pedder galaxias at Lake Oberon that indicated a continued healthy population of this species at this translocated site.

Only one specimen of the Pedder galaxias was captured at the Strathgordon water supply dam during the year, so 117 individuals were translocated from Lake Oberon to this site to try and re-establish the population. A survey of the Crossing River to establish whether the Pedder galaxias had colonised the river from Lake Oberon indicated that no colonisation had occurred to date.

Monitoring of four species, Swan galaxias, Clarence galaxias, saddled galaxias and Arthurs paragalaxias was also undertaken for health and security purposes as detailed in the recovery plan.

Liaison with Forestry Tasmania ensured that assessments of the Swan and Clarence galaxiids were conducted where necessary and protective prescriptive measures were implemented to protect these populations. Barriers to protect populations of these species from predatory fish were investigated and the efficiency of existing barriers was assessed and modifications identified.

A survey for the dwarf galaxias (*Galaxiella pusilla*) was also undertaken prior to logging operations in the northwest of the State.

A draft Whitebait Fishery Management Plan was prepared, the Giant Freshwater Lobster Recovery Plan was released for public comment in June and the Threatened Tasmanian Galaxiid Recovery Plan 2005 – 2009 was submitted for public comment and final consideration by the State and Commonwealth governments.

Information was disseminated to the general public to raise awareness of native fish and conservation issues at the Inland Fisheries Service Open Weekend and the National Threatened Species Day.

PLANS FOR 2005-06

- Preparation of funding proposals to enable continued implementation of the galaxiid recovery plan, particularly the continued monitoring of all populations and threat abatement strategies.
- Continued monitoring and trout removal for the protection of Clarence galaxias habitat, continued effort to establish a population of the Pedder galaxias at Strathgordon, and continued investigation of options for protecting the two Swan galaxias populations from redfin perch.
- Investigation of funding opportunities to implement the Giant Freshwater Lobster Recovery Plan, assuming the plan is adopted in 2005-06.
- In conjunction with Hydro Tasmania, replenishment of breeding stocks of the Pedder galaxias.

OUTPUT GROUP 3 COMMERCIAL FISHERIES

FOCUS

Output Group 3 covers the licensing, management, research, assessment, monitoring and compliance specific to commercial fishery activities. These include the licensing of fish dealers, importers, fish farmers and harvesters of freshwater fish species.

OUTPUT 3.1 LICENSING OF FISH DEALERS, FISH FARMS AND PRIVATE FISHERIES

OBJECTIVES

- To ensure compliance with the *Inland Fisheries Act 1995*.
- To facilitate and encourage fish farming in the State, while ensuring that appropriate and adequate safeguards for the freshwater environment are implemented and maintained.

ACHIEVEMENTS IN 2004-05

Fish Dealers

All commercial importers of freshwater fish are regulated by the Service, and restrictions are applied to particular species of live fish based on disease risks and temperature tolerance. During the year, 29 fish dealers were registered by the Service.

Fish farms

All freshwater fish farms are licensed by the Service, and applications are assessed in collaboration with other State authorities to ensure compliance with environmental, planning and water management requirements. During the year, 20 salmonid fish farms and eight ornamental aquarium fish operations, were licensed by the Service.

Private Fisheries

Private fisheries provide for recreational fishing opportunities without being subject to angling licence provisions. During the year, 18 private fisheries were licensed.

PLAN FOR 2005-06

Continued assessment of applications in collaboration with relevant State regulatory authorities.

OUTPUT 3.2 COMMERCIAL EEL FISHERY

OBJECTIVE

To ensure the commercial eel fishery is managed sustainably and complies with the *Inland Fisheries Act 1995*.

ACHIEVEMENTS IN 2004-05

Commercial Eel Fishing Licences

Tasmania's commercial eel fishery is a limited entry fishery with licences being specific to one or more major catchments. All licence holders are required to maintain accurate records of daily fishing activities and submit monthly returns to the Service. This information is used to assess catch-effort and to monitor stocking requirements. During the year, there were 12 commercial eel licences issued, and the total weight of wild eels sold was 6,729 kg.

Eel Stocking

Each year, the Service harvests wild eel stocks from the Trevallyn Tail Race and Meadowbank Dam, and distributes them in inland waters dedicated to the commercial eel fishery to replenish stocks above dam barriers.

During the year, a total weight of 968 kg of elvers, were harvested. Of these, 70 kg were distributed in dams on King Island, 40 kg into Lake Sorell, 235 kg into the South Esk catchment, 40 kg into Lagoon of Islands, 10 kg into Craighourne Dam and 150 kg into Lake Meadowbank. The Service also sold 408 kg to a commercial operator.

PLAN FOR 2005-06

Continued stocking of elvers, and monitoring and licensing of the commercial eel fishery in Tasmania.

OUTPUT GROUP 4 PEST FISH MANAGEMENT

FOCUS

Output Group 4 is delivered by the Carp Management Section of the Protection and Development Branch, and the Fisheries Management and Planning Branch. It covers the management, monitoring and control of identified pest fish species, particularly those species listed as 'Controlled Fish' under the *Inland Fisheries Act 1995*. These include European carp (*Cyprinus carpio*), all species of mainland yabbies (*Cherax* spp.) and Eastern gambusia (*Gambusia holbrooki*).

OUTPUT 4.1 CARP MANAGEMENT PROGRAM

OBJECTIVES

- To minimise the impact of carp on Tasmanian fisheries.
- To contain carp to lakes Sorell and Crescent.
- To eradicate carp from Tasmanian waters in the long term.

ACHIEVEMENTS IN 2004-05

The containment of carp, which remains a high priority for the Service, has been achieved for the tenth year of the program. An extensive survey was conducted in the Clyde River, off stream storages and Lake Meadowbank, but there was no evidence of carp downstream in these waters. Surveys conducted around the State also found no evidence of European carp.

The Service focused a concentrated effort on the spring spawning period. Extra staff were directed to the program to maintain daily monitoring of the lakes during this period in an attempt to prevent spawning. The use of radio tracking continued to be a key to finding carp aggregations, and barriers and traps that had been constructed over the year, proved successful in assisting the capture of carp in each lake.

Lake Crescent

Since the start of the program, a total of 7,778 carp have been removed from Lake Crescent. No mature females were captured during the past twelve months despite the regular capture of tagged males while they were attempting to enter spawning areas over the spring period. This indicates that the number of females remaining is low. The barriers and traps that had been installed across the marshes over winter, proved very effective in capturing carp during spring. Monthly surveys in Lake Crescent failed to find any sign of successful recruitment from the spawning period.

Lake Sorell

As with Lake Crescent, daily monitoring was undertaken on Lake Sorell during the spring period. Male carp containing transmitters were observed moving large distances most likely in search of females. These fish were targeted on a regular basis, either when they aggregated or when they sat individually on "prime" sites. Over the past twelve months only one mature female was captured. Male carp, implanted with transmitters, were used to enable the capture of this female. A total number of 2,358 carp have been taken from the lake since 1995.

No spawning was observed and subsequent fyke net surveys supported these observations because no juvenile carp were captured.

During autumn, the Service commenced the construction of exclusion fences across the areas known as the Isthmus and the Blowfly. These fences are to complement a purpose built barrier net which will be deployed to divide Lake Sorell into two sections. Radio tracking data from past years has shown that carp pass through these two areas regularly and the aim is to capture them in traps as they attempt to do so.

The expansion of the Lake Sorell Outlet has been completed allowing for better screening of water as it passes from the lake and this will also enable more efficient water operations.

PLANS FOR 2005-06

- Continuation of the carp containment strategy and monitoring of populations and sightings around the State.
- Continuation of daily lake monitoring and response to spawning activity during spring/summer, radio tracking to find carp aggregations and carp eradication.
- Deployment and monitoring of the purpose built barrier net.

OUTPUT 4.2 EASTERN GAMBUSIA PROGRAM

OBJECTIVE

To locate and eradicate populations of Eastern gambusia (*Gambusia holbrooki*) around Tasmania.

ACHIEVEMENTS IN 2004-05

This year, post treatment fish surveys were conducted at two dams in southern Tasmania that previously held populations of Eastern gambusia. The surveys indicated that the poisoning treatment had been successful in eradicating the fish and that native invertebrate fauna had returned to the dam.

A further distribution survey of Eastern gambusia confirmed that the species is confined within its previous range, although another large population was found in a farm dam.

A farm dam in Legana containing gambusia which had remained from a previous unsuccessful poisoning attempt, was stocked with rainbow trout last year to test the impact of trout on the gambusia population. A survey of the dam this year indicated that the rainbow trout had been ineffective in preying on gambusia. Brown trout were electrofished from a nearby creek and added to the dam to test if this species would predate on the gambusia. A subsequent study of the diet of these brown trout also indicated that this species was ineffective at controlling numbers of gambusia in this situation.

In early June another attempt was made to eradicate gambusia from the Legana dam along with the new dam found during the summer survey. In this attempt, the water in both dams was pumped down to a residual level and treated.

The Service participated in regular Gambusia Joint Management Committee meetings and provided assistance to a PhD student from the University of Tasmania who is studying this species.

PLANS FOR 2005-06

- Continuation of monitoring treated dams for signs of re-infestation by gambusia.
- Continued participation on the Gambusia Joint Management Committee.

OUTPUT 4.3 INTRODUCED YABBY PROGRAM

OBJECTIVES

- To prevent further translocation of introduced yabbies around Tasmania.
- To continue to assess the distribution of *Cherax destructor* in the State.
- To investigate and test methods of eradicating this species at isolated sites.

ACHIEVEMENTS

The Service continued to monitor the distribution of *Cherax destructor* within the State and responded to sightings by assessing each location and report individually.

PLANS FOR 2005-06

- Continued monitoring of sites that have been treated.
- Assessment of the success of calcium hydroxide applications as a method of eradication.
- Continued response to sightings at new locations.
- Continued community education on this species.

OUTPUT GROUP 5 ENVIRONMENTAL ISSUES, ADVICE AND PROJECTS

FOCUS

Output Group 5 is delivered by the Fisheries Management and Planning Branch. It covers a diverse range of environmental issues including artificial in-stream barriers (dams, weirs and culverts), habitat destruction and restoration, ecological studies, water quality degradation and assessment. A main focus is to provide specific and technical advice to the Service, IFAC and other government agencies, the private sector and community groups regarding fisheries management requirements.

OUTPUT 5.1 ENVIRONMENTAL ISSUES AND ADVICE

OBJECTIVE

- To preserve fish passage in river systems for the protection of all freshwater fauna.
- To provide advice on the ecosystem requirements for the development of natural resource and water management plans, with a particular focus on fisheries related issues.
- To provide input to the State water management planning process as plans are developed.

ACHIEVEMENTS IN 2004-05

Fish Passage Assessment

The Service continued to provide direct input to the State's farm dam construction process through its representation on the Technical Advisory Committee (TAC), which provides technical input into farm dam applications for the Assessment Committee for Dam Construction (ACDC). This has enabled the Service to review development applications for farm dams and ensure that fish passage issues are considered in dam assessment reporting.

During 2004-05, the Service made comment on 89 Dam Assessment Reports with recommendation for further studies to be undertaken on 20 of these dam applications. These further studies were required based on the potential impact of dam construction on native freshwater species. Three dam proponents were required to design and incorporate provisions for fish passage into the proposed dam design. The Service was required to prepare an Evidence Statement as part of a Resource Management and Planning Appeal Tribunal meeting in regard to one of these applicants.

The Service continued to monitor fish populations as part of the Natural Heritage Trust project on redundant weirs, which involved the removal or modification of barriers to fish passage. Other fish passage issues arising in relation to new farm dam applications continued to be reviewed through the ACDC process.

The Service also provided comment and input into three additional Development Proposals from around the State that potentially may have impacts on freshwater aquatic species.

Water Management Plans

The Service had input in to the Lakes Sorell and Crescent Water Management Plan and the Clyde River Water Management Plan, which were finalised this year.

Natural Resource Management

The Service commented on and provided input relevant to the Inland Fisheries Service on all three (Cradle Coast, North and South) of the Draft Natural Resource Management Strategies prepared this year.

OUTPUT 5.2 ENVIRONMENTAL MANAGEMENT PROJECTS

OBJECTIVES

- To provide technical support to community groups undertaking environmental projects.
- To assist in the conservation of native species, maintenance of freshwater ecosystems and enhancement of biodiversity.

ACHIEVEMENTS IN 2004-05

Clyde Marsh Fencing Project

Through the Lakes Sorell and Crescent Rehabilitation Program, the Service identified the need for management strategies to protect sensitive wetlands in the catchment of the lakes from long term grazing impacts. It organised a project with Greening Australia, Crown Land Services of DPIWE and the Taylor family (adjacent landowners to Lake Crescent) to fence off Clyde Marsh, an area on the south western side of Lake Crescent. Approximately 8 km of fencing was installed between private property and the Crown Wetland. Funding for the project was obtained through State and Federal government agencies, and Greening Australia. The work was completed in March 2005 using labour supplied by the Service, the landowner and volunteers.

PLANS FOR 2005-06

- Continued provision of technical support to community groups undertaking environmental projects.
- Continued identification of the need for management strategies for the conservation of native species, maintenance of freshwater ecosystems and enhancement of biodiversity.

OUTPUT GROUP 6 FISHERIES COMPLIANCE

FOCUS

Output Group 6 is delivered by the Compliance Section, which is made up of dedicated Inland Fisheries Enforcement Officers and other authorised staff. This section covers the areas of compliance, which includes enforcement activities, investigations and prosecutions, as well as educational and public relations activities. Enforcement Officers are also involved across all areas of the Service, and routinely undertake fisheries management tasks.

OUTPUT 6.1 ENFORCEMENT

OBJECTIVES

- To maximise compliance with Tasmanian inland fisheries legislation by the public.
- To help achieve the objectives of inland fisheries management plans.
- To promote inland fishing to the public and educate anglers regarding responsible fishing.

ACHIEVEMENTS IN 2004-05

During the year, an extra seven Inland Fisheries staff were authorised as Officers to help with compliance activities statewide.

Enforcement Officers checked the licences of 3,867 anglers and 296 whitebait fishers at inland waters during the year. Of these, six anglers and four whitebait fishers were charged with the offence of taking fish without a licence.

During the year, Enforcement Officers undertook 12 prosecutions. All but one was successful. Twelve offenders were charged and fined \$6,250.00 with court costs of \$226.85. In addition, 34 infringement notices were paid amounting to \$5,300. Ten infringement notices remained unpaid or summonsed at 30 June 2005. The number of specific offences under prosecutions and infringement notices (paid and summonsed) are also detailed in Table 10, below.

Prosecution Offences	No	Infringement Notices Paid	No
Fishing without an angling licence	6	Be in control of another persons fishing rod	1
Take whitebait without a licence or permit	4	Fishing without an angling licence	11
Unattended set rod	1	Fish with more than one rod and line	1
Possess or use a net other than a landing net	4	Possess or use a net other than a landing net	2
Hinder an Officer	1	Fish in closed waters	3
Falsely representing to be licensed	3	Unattended set rod	11
Use bottle or can as strike indicator	2	Use a bottle or can as a strike indicator	5
Use more than one rod and line	1	Total	34
Take fish by means other than rod and line	1	Infringement Notices Unpaid & Summonsed	No
Possess an assembled rod when unlicensed	1	Posses a net	1
Total	24	Take acclimatised fish without an angling licence	8
		Unattended set rod	1
		Total	10

Table 10 List of prosecutions in 2004-05

Enforcement Officers continued to conduct angler creel surveys, which is part of routine licence checking to obtain feedback on fishery performance. The greatest number of anglers were checked at Arthurs Lake (875), Craighourne Dam (340), Great Lake (245), Tooms Lake (200), Bradys Lake (176) and Brushy Lagoon (151).

A summary of the activities undertaken by Enforcement Officers during the year is contained in Table 11 below. This shows that the greatest amount of time spent by inspectors on operational activities was on recreational fisheries compliance followed by fisheries management work.

Operational activities	Percentage
Compliance – Recreational Fisheries	36.0
Compliance - Native Fisheries Conservation	0.8
Compliance – Commercial Fisheries	1.3
Special Operations	1.8
Fisheries Management	6.1
Noxious Fisheries Management	2.6
Permit Administration	0.3
Overheads (including Leave)	51.1
Total	100.0

Table 11 Proportion of time spent by enforcement officers on operational activities in 2004-05

PLANS FOR 2005-06

- Continued implementation of statistical reporting and angler creel survey.
- Introduction of a compliance operational plan.
- Continued education and assistance to stakeholders.

OUTPUT GROUP 7 BIOLOGICAL CONSULTANCY

FOCUS

Output Group 7 is delivered by the Biological Consultancy Unit of the Protection and Development Branch. It covers the external environmental consultancy services offered by the Service, primarily the provision of advice and information in areas of biological and ecological management of freshwater aquatic ecosystems in Tasmania.

At present, consultancy work is largely dedicated to providing quality data, advice and investigative work to Hydro Tasmania's Environmental Services section in the following areas:

- Quantitative and qualitative native fish survey and identification.
- Pest fish survey and identification.
- Quantitative macro-invertebrate sampling, identification and enumeration.
- Qualitative and quantitative aquatic macrophyte surveys.
- Modelling and mapping of sediment resuspension dynamics in lakes.
- Extensive expertise and experience in water quality sampling, analysis and interpretation.
- Nutrient and sediment loading estimates in streams.
- Zooplankton and phytoplankton sampling and enumeration.
- Extensive expertise in shallow lake ecology.

Hydro Tasmania has been the principal client of the Consultancy since its inception, and the close relationship between the two agencies has facilitated the development of the Service's marketable consulting services.

OUTPUT 7.1 ENVIRONMENTAL CONSULTANCY SERVICE TO HYDRO TASMANIA

OBJECTIVES

- To provide a high quality, cost effective environmental consultancy service to Hydro Tasmania.
- To collect information in relation to aspects of inland freshwater ecosystems to assist Hydro Tasmania in managing the State's freshwater resources.

ACHIEVEMENTS IN 2004-05

- Lake and river water quality monitoring, river algae, habitat and macro-invertebrate monitoring for Hydro Tasmania's Water Health Monitoring Program.
- Continued routine water quality monitoring of Lagoon of Islands.
- Biological surveys on the algal beds of Great Lake.
- Fish surveys in the Gordon River.
- Pest fish surveys in several areas of the State.
- Promotional activities outlining the work carried out by the Consultancy for Hydro Tasmania.

PLANS FOR 2005-06

- Continued routine monitoring of Lagoon of Islands.
- Continued involvement in monitoring for Hydro Tasmania's Water Health Monitoring Program.
- Undertake native fish migration surveys.
- Undertake fish surveys as part of the Basslink monitoring program.
- Involvement in environmental flow surveys across several areas of the State.
- Undertake work promoting the involvement of the Consultancy with Hydro Tasmania.

BUSINESS SERVICES

FOCUS

Business Services covers the range of administrative overheads and business inputs for the delivery of the organisational outputs. It is delivered primarily by the Business Services Branch of the Service with the support of the Human Resources section of the Department of Primary Industries, Water and Environment (DPIWE). The Secretary of DPIWE is Head of Agency for the purposes of the *State Service Act 2000*, and as such, all human resource management is undertaken by that agency. DPIWE also provides system support for Finance One, the Department's and Service's finance package.

Corporate planning

In December 2004, the Minister approved the Service's Corporate Plan, which was developed during the year. The thrust of the plan was to adopt contemporary business approaches in decisions relating to finance and asset management in the organisation. This included the rationalisation of locations to assist in better communication and management within the Service. The plan is a living document that will be reviewed on a regular basis. IFAC has established a sub-committee to consider the long-term objectives of the IFS.

Financial Administration

Prior to 2004-2005 most of the financial functions of the Service were undertaken by DPIWE. During the year a concerted effort was made to rest responsibility and accountability for key accounting functions with the Service. In addition, a range of business processes was introduced to improve efficiency and relations with clients. Accordingly, Service staff now undertakes creditors, debtors, bank reconciliation and payroll tax responsibilities. It is envisaged that payment runs and creditor creation will be transferred to the Service in the coming year. A re-implementation of Finance One was completed at year-end.

Asset Management

The Service resumed responsibility for the delivery of its vehicle fleet and asset management. Administrative support had previously been supplied by DPIWE. The vehicle fleet was further reduced during the year as a consequence of the introduction of pooling arrangements. The Service installed MYOB Asset Manager as its assets recording mechanism during the year that allows simplified calculation of depreciation. A review was undertaken of a range of assets and either rationalisation or upgrading to meet current requirements is now occurring. The laboratory at Liawenee and part of the office at Lampton Ave was leased during the year, achieving better asset utilisation and financial return.

Salmon Ponds Tourist Operation

The contractual arrangements for the lease of the tourist operations to Nekon Pty Ltd were concluded during the year. The Service is committed to raising standards at the Salmon Ponds to that of a world class destination and ongoing improvements continued during the year. Nekon Pty Ltd sponsored the Beacon Foundation in the establishment of two barbeques in the river walk precinct. The Service commenced planning to assist in this project, through the construction of a disabled toilet on the site and the fit out of the barbeque shelters.

Human Resources

At year-end, 34 people were employed by the Service, equating to 30.54 Full Time Equivalents. This is a reduction of 3.81 Full Time Equivalents compared to the same time last year.

Freedom of Information requests

Three requests for information under the Freedom of Information legislation were made during the year. These all related to the sale of the Corra Linn property at Blessington Rd, St Leonards.

Exemptions Permitted

The Service provides exemptions from the *Inland Fisheries Act 1995* for various purposes, such as research, education, protection and development. A designated fee is charged for private companies seeking an exemption permit to conduct research in inland waters, but there is no charge for a permit to schools or universities wishing to conduct research for educational purposes. During the year, the Service issued approximately 76 Exemption Permits for research and related reasons.

The Service also provides exemptions to fish without an angling licence under certain circumstances and no fee is charged for this process. This is primarily a community service obligation, which enables members of the community who attend special schools for the disadvantaged or who are disabled, as well as their carers, to fish without a licence. During the year, the Service authorised 39 permits to fish without a licence.

Consultants Employed

The Service employs a range of service providers for the delivery of property cleaning, maintenance, security, fire and software services. These engagements are usually for twelve months. No major consultant appointments were made by the Service during the reporting year.

Marketing

Marketing activities continued to focus on the recreational angling licence under the Licensing Review Project and a strategic marketing plan was developed. This aimed to increase licence revenue and reduce administration costs, as well as to satisfy customers in the design of the licence product, categories and fees, and partner stakeholders in the distribution and sale of licences. It also sought to improve the management of the licence holder database so as to provide accurate and up to date records on licence sales and information on the angling market.

A joint project with the Service Tasmania Unit, DPAC was undertaken to improve the licence sales process through Service Tasmania shops and simplify associated business rules. It resulted in the development and use of a licence application form rather than the traditional licence books by Service Tasmania. Liaison meetings continued with representatives from the tackle industry to address distribution and sales issues through private tackle agents, and members of the angling community continued to be consulted regarding a list of proposed changes to the licence product.

Several of the proposed changes under the marketing strategy were implemented in preparation for the 2005-06 season. These included improvements to the accuracy and flexibility of the licence holder database, earlier mail-out of renewal notices, improvement to the design of the licence card, a rounding down of the licence fees, and an extension of the time period for short term licences. The previous 14 Day licence was extended to a 28 Day licence, the 3 Day licence to a 7 Day licence and the 1 Day licence specified as a 24 Hour licence from the time of issue.

Public Events

The Service's annual Free Fishing Day, which is a day when people are not required to hold an angling licence to fish in open inland waters, was held on Sunday 14 November this year. Eight waters around the State were stocked with good sized trout and public events were held by angling clubs from Penguin, Waratah, George Town, Launceston, Longford, Clarence and Glenorchy, and Oatlands District High School. Valuable support for the event was also provided by Fishcare Volunteers.

The Service showcased a range of work projects at its annual Open Weekend at Liawenee on 21-22 May, which focuses on the annual spawning migration of brown trout from Great Lake. It was well supported by the fishing industry with trade exhibits, and the angling community, with clubs providing food stalls, displays and demonstrations. An estimated 3,000 people attended over the two days and it was noted that there was a larger proportion of children attending this year compared with previous years.

Promotions

The Service celebrated the start of the 2004-05 season with an official opening by the Minister for Primary Industries and Water, Steve Kons at Lake Crescent, which was reopened to recreational fishers after nearly ten years of closure due to the discovery of carp.

The Inland Fisheries *Trout Lagoon* was used at the IFS Open Weekend again this year, as well as the Deloraine Craft Fair and the Derwent Valley Festival. This was the third and final year of the "Spot the Trout" sticker competition, which was run in conjunction with the Trout Lagoon, and was sponsored by Spot On The Fishing Connection, Wigstons Tassie Devils, the Australian Fishing Tackle Association and Trevor Hawkins Designs. Three final prize winners were announced in December. Each received a set of fishing tackle and equipment donated by the program sponsors as well as an adult angling licence from the Service for an adult to take the children fishing.

Preparation began for a promotion for the 2005-06 season to give-away a prize package of a boat, trailer and motor, as well as fishing tackle and safety equipment worth \$10,000 with the purchase of an Annual Licence within the first three months of the season.

Publications

The Service produced and distributed its annual publication, the *Tasmanian Inland Fisheries Angling Code 2004-05*, which covers all angling regulations for the year. The monthly publication of the Service's electronic news bulletin, *Angler News*, which is distributed to all fishing clubs and associations, as well as individual anglers throughout the State, continued throughout the year. The Service continued to manage the publication of electronic information on its website, some of which is also 'harvested' for the *FishOnline* web site. During the year, the Service produced the *Carp Management Program Report Lakes Crescent and Sorell 1995-June 2004*, and the *Lakes Sorell and Crescent Catchment Management Plan* was released.

Community, Industry and Government Liaison

Service staff attended a range of public meetings and community events throughout the year. A list of these is provided in Table 12, below.

Event	Date
Salmon release with Minister, Lake Meadowbank	2 Jul 04
New Norfolk Angling Club Meeting	2 Jul 04
North West Fisheries Association AGM, Penguin	3 Jul 04
Tas Fly Fishing Association Meeting, Launceston	10 Jul 04
Trout Guides and Lodges Tasmania Dinner, Hobart	10 Jul 04
Northern Tasmanian Fisheries Association AGM, Launceston	23 Jul 04
Bridgewater Anglers AGM & Dinner, Brighton	30 Jul 04
Lansdowne Primary School, Giant Freshwater Lobsters	4 Aug 04
Ulverstone Anglers Club – General Meeting	4 Aug 05
Atlantic Salmon release, Lake Barrington	5 Aug 04
Launch of Brown Trout Season, Lake Crescent	7 Aug 04
Evandale Rotary Club	9 Sep 04
City Park FM Radio Interview	17 Sep 04
Fishcare Volunteers Meeting	17 Oct 04
Recreational Fisheries Forum, Liawenee	24 Sep 04
Ulverstone Anglers Meeting, Ulverstone	3 Nov 04
Launch of Gambusia project, Tamar Wetland Centre	11 Nov 04
Gambusia Media Launch, Launceston	11 Nov 04
Launceston, Longford & Oatlands Anglers, Free Fishing Day	14 Nov 04
Deloraine Craft Fair, Deloraine	5-7 Nov 04
Australian Fishing Tackle Association Meeting, Hobart	23 Nov 04
Lake Burbury Fishing Competition	26-28 Nov 04
Van Dieman Fly Fishers, General Meeting	30 Nov 04
Recreational Fisheries Forum, Liawenee	10 Dec 04
Freshwater Anglers Council Tasmania Meeting, Hobart	12 Dec 04
Public Meeting Corporate Plan, Campbell Town	8 Feb 05
Fly Fishers Club Meeting, Launceston	2 Mar 05
Recreational Fisheries Forum, Liawenee	11 Mar 05
Glenorchy Probus Club – General Meeting	5 Apr 05
Australian Fishing Tackle Association Meeting, Launceston	11 Apr 05
Celebration of Trout Dinner, Launceston	4 May 05
Deloraine Angling Club Dinner	13 May 05
Liawenee Open Weekend	21-22 May 05
Recreational Fisheries Forum, Liawenee	11 Jun 05
New Norfolk Angling Club Annual Dinner	24 Jun 05
Australian Fishing Tackle Association Meeting, Launceston	30 Jun 05

Table 12 List of public meetings and community events attended by Service staff in 2004-05

APPENDICES

Appendix 1 Stocking of inland waters for public fishing in 2004-05

Water	Date	Age	Brown	Rainbow	Brook	Salmon	Stock	Origin
Arboretum	Sep-04	Fry	1000				Wild	Saltas
Beaconsfield - Brandy	Jan-05	Fry	200				Wild	Salmon Ponds
Beaconsfield - Bruins	Jan-05	Fry	200				Wild	Salmon Ponds
Beaconsfield - Farm	Jan-05	Fry	200				Wild	Salmon Ponds
Beaconsfield - WS	Jan-05	Fry	1000				Wild	Salmon Ponds
Big Lagoon (Bruny Is.)	Jan-05	Fry	1000				Wild	Salmon Ponds
Blackmans Lagoon	Sep-04	Fingerling		1200			Domestic	Mountain Stream Fishery
Bradys Lake	May-05	Adult	2000				Wild	Liawenee
Bradys Lake	Feb-05	Adult				720	Domestic	Saltas
Bradys Lake	Jun-05	Adult				150	Domestic	Saltas
Bradys Lake	Nov-04	Adult			60		Domestic	Sevrup Fisheries Pty Ltd
Bradys Lake	Nov-04	Adult		40			Domestic	Sevrup Fisheries Pty Ltd
Bradys Lake	Jan-05	Fingerling	15000				Wild	Saltas
Bradys Lake	Jan-05	Fingerling		400			Domestic	Sevrup Fisheries Pty Ltd
Bradys Lake	Apr-05	Yearling			7000		Domestic	Sevrup Fisheries Pty Ltd
Bradys Lake	Nov-04	Yearling		4800			Domestic	Springfield Fisheries
Bronte Lagoon	Dec-04	Adv Fry			20000		Domestic	Salmon Ponds
Bronte Lagoon	Mar-05	Fingerling		3000			Domestic	Tassal Russell Falls
Bruisers Lagoon	Jun-05	Adult	80				Wild	Liawenee
Brumbys Creek	Jun-05	Adult	600				Wild	Liawenee
Brushy Lagoon	May-05	Adult	410				Wild	Liawenee
Brushy Lagoon	Feb-05	Adult				300	Domestic	Saltas
Brushy Lagoon	Aug-04	Adult	150				Wild	Sassafras Creek
Brushy Lagoon	Aug-04	Adult				80	Domestic	Sevrup Fisheries Pty Ltd
Brushy Lagoon	Nov-04	Fingerling		3000			Domestic	Springfield Fisheries
Brushy Lagoon	May-05	Yearling			7000		Domestic	Sevrup Fisheries Pty Ltd
Camerons Lagoon	Jun-05	Adult	50				Wild	Liawenee
Clarence Lagoon	Dec-04	Adv Fry			10000		Wild	Salmon Ponds
Craigbourne Dam	Jun-05	Adult	30				Wild	Lake Crescent
Craigbourne Dam	Jul-04	Adult				30	Domestic	Saltas
Craigbourne Dam	Feb-05	Adult				720	Domestic	Saltas
Craigbourne Dam	May-05	Adult				120	Domestic	Saltas
Craigbourne Dam	Aug-04	Adult				480	Domestic	Sevrup Fisheries Pty Ltd
Craigbourne Dam	Dec-04	Adult			350		Domestic	Snowy Range Trout Fishery
Craigbourne Dam	Nov-04	Adult		350			Domestic	Springfield Fisheries
Craigbourne Dam	Dec-04	Adv Fry			6250		Domestic	Snowy Range Trout Fishery
Craigbourne Dam	Jan-05	Fingerling			2500		Domestic	Snowy Range Trout Fishery
Craigbourne Dam	Apr-05	Fingerling		3000			Domestic	Springfield Fisheries
Craigbourne Dam	May-05	Yearling			7000		Domestic	Sevrup Fisheries Pty Ltd
Curries River Reservoir	May-05	Adult	1000				Wild	Liawenee
Curries River Reservoir	Nov-04	Adult		350			Domestic	Springfield Fisheries
Curries River Reservoir	Dec-04	Adv Fry		20000			Domestic	Snowy Range Trout Fishery
Curries River Reservoir	Jan-05	Fingerling	13500				Wild	Saltas
Curries River Reservoir	Nov-04	Yearling		850			Domestic	Springfield Fisheries
Dee Lagoon	Mar-05	Fingerling		1500			Wild	Salmon Ponds
Dee Lagoon	Jan-05	Fingerling		7600			Domestic	Sevrup Fisheries Pty Ltd
Dee Lagoon	Feb-05	Fingerling		6500			Domestic	Sevrup Fisheries Pty Ltd
Dee Lagoon	Nov-04	Yearling		4800			Domestic	Springfield Fisheries
Don River	Sep-04	Fry	6000				Wild	Saltas
Don River	Sep-04	Fry	6000				Wild	Saltas
Duncan Lagoon	Jun-05	Adult	30				Wild	Liawenee
Four Springs Lake	Nov-04	Adult		100			Domestic	Sevrup Fisheries Pty Ltd
Four Springs Lake	Nov-04	Fingerling		3000			Domestic	Springfield Fisheries
Four Springs Lake	Jun-05	Adult	105				Wild	Lake Crescent
Frombergs Dam	Feb-05	Adult				12	Domestic	Saltas
Great Lake	Mar-05	Fingerling		45000			Wild	Saltas
Guide Dam	Nov-04	Fingerling		20000			Domestic	Springfield Fisheries
Lagoon of Islands	Jul-04	Yearling		2500			Domestic	Salmon Ponds
Lake Barrington	Aug-04	Adult				200	Domestic	Saltas
Lake Barrington	Aug-04	Adult				80	Domestic	Sevrup Fisheries Pty Ltd
Lake Barrington	Aug-04	Fingerling		5000			Domestic	Mountain Stream Fishery
Lake Barrington	Dec-04	Adv Fry		12500			Domestic	Snowy Range Trout Fishery
Lake Barrington	Feb-05	Adult				700	Domestic	Saltas
Lake Barrington	May-05	Adult				200	Domestic	Saltas

Appendix 1 Stocking of inland waters for public fishing in 2004-05 (Cont.)

Water	Date	Age	Brown	Rainbow	Brook	Salmon	Stock	Origin
Lake Barrington	Jun-05	Adult	1000				Wild	Liawenee
Lake Cethana	Sep-04	Fry	4500				Wild	Saltas
Lake Chipman	Mar-05	Adv Fry	2000				Wild	Salmon Ponds
Lake Crescent	Jun-05	Adult	600				Wild	Liawenee
Lake Dulverton	Nov-04	Adult		100			Domestic	Salmon Ponds
Lake Dulverton	Nov-04	Fingerling		300			Domestic	Oatlands High School
Lake Echo	Feb-05	Fingerling		7000			Domestic	Sevrup Fisheries Pty Ltd
Lake Leake	Dec-04	Adv Fry		10000			Domestic	Snowy Range Trout Fishery
Lake Leake	Jan-05	Fingerling			16000		Domestic	Sevrup Fisheries Pty Ltd
Lake Leake	Nov-04	Fry	30000				Wild	Salmon Ponds
Lake Leake	May-05	Yearling			2000		Domestic	Sevrup Fisheries Pty Ltd
Lake Leake	Nov-04	Yearling		400			Domestic	Springfield Fisheries
Lake Mikany	Nov-04	Yearling		1000			Domestic	Springfield Fisheries
Lake Plimsoll	Nov-04	Fry			18000		Domestic	Salmon Ponds
Lake Rolleston	Nov-04	Fry			3000		Domestic	Salmon Ponds
Lake Rowallan	Nov-04	Adv Fry		10000			Domestic	Springfield Fisheries
Lake Rowallan	Nov-04	Fingerling		10000			Domestic	Springfield Fisheries
Lake Rowallan	Nov-04	Fingerling		6500			Domestic	Springfield Fisheries
Lake Selina	Nov-04	Fry			4000		Domestic	Salmon Ponds
Lake Skinner	Dec-04	Adv Fry		600			Domestic	Snowy Range Trout Fishery
Lake Waverley	Nov-04	Adult		100			Domestic	Salmon Ponds
Little Waterhouse Lake	Sep-04	Fingerling		1200			Domestic	Mountain Stream Fishery
Lodge Dam Miena	Jun-05	Adult	50				Wild	Liawenee
Lynch Lagoon	Jun-05	Adult	30				Wild	Liawenee
Meadowbank Dam	Feb-05	Adult				1400	Domestic	Saltas
Melrose Creek	Sep-04	Fry	1000				Wild	Saltas
Mersey River	Jun-05	Adult	500				Wild	Liawenee
Mersey River	Sep-04	Fry	10000				Wild	Saltas
Mersey River	Sep-04	Fry	10000				Wild	Saltas
Pawleena Lagoon	Jul-04	Adult	300				Wild	Arthurs Lake
Pawleena Lagoon	Nov-04	Adult		130			Domestic	Salmon Ponds
Penguin Water Supply	Nov-04	Adult		100			Domestic	Springfield Fisheries
Penstock Lagoon	Jun-05	Adult	500				Wild	Hydro Creek
Penstock Lagoon	Dec-04	Adv Fry	20000				Wild	Salmon Ponds
Penstock Lagoon	Mar-05	Fingerling		1500			Wild	Saltas
Pet Dam	Nov-04	Fingerling		10000			Domestic	Springfield Fisheries
Rostrevor Dam	Dec-04	Fry	5000				Wild	Salmon Ponds
Taylor's Dam	Nov-04	Yearling		200			Domestic	Salmon Ponds
Tooms Lake	Aug-04	Fingerling		18000			Domestic	Mountain Stream Fishery
Tooms Lake	Nov-04	Fry	30000				Wild	Salmon Ponds
Trevallyn Dam	Feb-05	Adult				300	Domestic	Saltas
Ulverstone Rearing Unit	Aug-04	Fry	130000				Wild	Salmon Ponds
Waratah Town Dam	Nov-04	Adult		200			Domestic	Springfield Fisheries

Appendix 2 Stocking of private dams for public fishing in 2004-05

Name	Area	Date	Age	Brown (wild)	Rainbow (domestic)	Origin
Van Essen K.	Abbotsham	Dec-04	Fry	200		North Motton R.U.
Jordan Bruce	Abbotsham	Dec-04	Fry	400		North Motton R.U.
Johnson G.	Abbotsham	Dec-04	Fry	300		North Motton R.U.
Anderson Wallace	Abbotsham	Dec-04	Fingerling		300	North Motton R.U.
Spencer	Bishopbourne	Dec-04	Adv Fry	1000		Salmon Ponds
Goss	Bishopbourne	Dec-04	Adv Fry	1000		Salmon Ponds
Badcock	Bishopbourne	Dec-04	Fry	500		Salmon Ponds
Medwin Craig	Black River	Dec-04	Fry	400		North Motton R.U.
Medwin Craig	Black River	Dec-04	Fry	500		North Motton R.U.
Medwin Craig	Black River	Dec-04	Fry	500		North Motton R.U.
Bott B.	Blythe Heads	Dec-04	Fry	200		North Motton R.U.
Gee D.	Blythe Heads	Dec-04	Fry	200		North Motton R.U.
Plapp L.	Blythe Heads	Dec-04	Fry	300		North Motton R.U.
Bott B.	Blythe Heads	Dec-04	Fingerling		100	North Motton R.U.
Plapp L.	Blythe Heads	Dec-04	Fingerling		100	North Motton R.U.
Cameron Max	Chudleigh	Dec-04	Fry	6000		North Motton R.U.
Deloraine DH School	Deloraine	May-05	Yearling		30	Salmon Ponds
P. W. Parker	Don	Sep-04	Fry	1000		Saltas
T. Parker	Don	Sep-04	Fry	1400		Saltas
Bovill Brothers	Don	Dec-04	Fry	300		North Motton R.U.
Bovill Brothers	Don	Dec-04	Fry	300		North Motton R.U.
Bovill Brothers	Don	Dec-04	Fry	300		North Motton R.U.
Bovill Brothers	Don	Dec-04	Fry	300		North Motton R.U.
Bovill Brothers	Don	Dec-04	Fingerling		300	North Motton R.U.
Bovill Brothers	Don	Dec-04	Fingerling		300	North Motton R.U.
Bovill Brothers	Don	Dec-04	Fingerling		300	North Motton R.U.
Bovill Brothers	Don	Dec-04	Fingerling		300	North Motton R.U.
Korpershoek Bros.	Forest	Dec-04	Fry	900		North Motton R.U.
Korpershoek Bros.	Forest	Dec-04	Fry	500		North Motton R.U.
Horton Bruce	Forest	Dec-04	Fry	400		North Motton R.U.
Dallas House	Forest	Dec-04	Fry	800		North Motton R.U.
Medwin Trevor	Forest	Dec-04	Fry	600		North Motton R.U.
Spinks Gregory	Forest	Dec-04	Fry	700		North Motton R.U.
Spinks Gregory	Forest	Dec-04	Fry	300		North Motton R.U.
Spinks Gregory	Forest	Dec-04	Fry	600		North Motton R.U.
Spinks Gregory	Forest	Dec-04	Fry	600		North Motton R.U.
Spinks Gregory	Forest	Dec-04	Fry	300		North Motton R.U.
Spinks Gregory	Forest	Dec-04	Fry	200		North Motton R.U.
Stones P.	Forth	Dec-04	Fry	300		North Motton R.U.
Mott Ron	Gawler	Dec-04	Fry	700		North Motton R.U.
Gillard Peter	Gawler	Dec-04	Fry	200		North Motton R.U.
Hingston Des	Gawler	Dec-04	Fry	500		North Motton R.U.
Hingston Des	Gawler	Dec-04	Fingerling		500	North Motton R.U.
Wings Farm Park	Gunns Plains	May-05	Yearling		600	Salmon Ponds
Walers K. A. & T. A.	Kindred	Dec-04	Fry	200		North Motton R.U.
Eustace Ray	North Motton	Dec-04	Fry	200		North Motton R.U.
Bonde A. B.	North Motton	Dec-04	Fry	600		North Motton R.U.
Bonde A. B.	North Motton	Dec-04	Fingerling		600	North Motton R.U.
Lee R.	North Motton and Preston	Dec-04	Fry	800		North Motton R.U.
Lee R.	North Motton and Preston	Dec-04	Fingerling		600	North Motton R.U.
Gee Duncan & Ann	Penguin	Dec-04	Fry	350		North Motton R.U.
Plapp Timothy	Penguin	Dec-04	Fry	300		North Motton R.U.
Wheatley John	Penguin	Dec-04	Fry	400		North Motton R.U.
Stuart Donald	Penguin	Dec-04	Fry	600		North Motton R.U.
Gee Duncan & Ann	Penguin	Dec-04	Fry	200		North Motton R.U.
Gee Duncan & Ann	Penguin	Dec-04	Fingerling		350	North Motton R.U.
Plapp Timothy	Penguin	Dec-04	Fingerling		300	North Motton R.U.
Wheatley John	Penguin	Dec-04	Fingerling		400	North Motton R.U.
Stuart Donald	Penguin	Dec-04	Fingerling		600	North Motton R.U.
Bonde Brian	Preston	Dec-04	Fry	300		North Motton R.U.
Bonde Brian	Preston	Dec-04	Fry	300		North Motton R.U.
Bonde Brian	Preston	Dec-04	Fry	300		North Motton R.U.
Bonde Brian	Preston	Dec-04	Fry	400		North Motton R.U.
Johnston Bruce	Preston	Dec-04	Fry	3000		North Motton R.U.
Brown J.	Preston	Dec-04	Fry	600		North Motton R.U.

Appendix 2 Stocking of private dams for public fishing in 2004-05 (Cont.)

Name	Area	Date	Age	Brown (wild)	Rainbow (domestic)	Origin
Brown J.	Preston	Dec-04	Fingerling		400	North Motton R.U.
Mersey Vale Dairies	Railton	Dec-04	Fry	500		North Motton R.U.
Gillespie John	Railton	Dec-04	Fry	900		North Motton R.U.
Lambert E. & K.	Railton	Dec-04	Fry	1000		North Motton R.U.
Mersey Vale Dairies	Railton	Dec-04	Fingerling		500	North Motton R.U.
Gillespie John	Railton	Dec-04	Fingerling		900	North Motton R.U.
Lambert E. & K.	Railton	Dec-04	Fingerling		2100	North Motton R.U.
Cummings J	Riana	Dec-04	Fry	400		North Motton R.U.
Wright I.	Riana	Dec-04	Fry	300		North Motton R.U.
Linc Sam	Riana	Dec-04	Fry	400		North Motton R.U.
Cummings J.	Riana	Dec-04	Fingerling		200	North Motton R.U.
Wright I.	Riana	Dec-04	Fingerling		100	North Motton R.U.
Linc Sam	Riana	Dec-04	Fingerling		200	North Motton R.U.
K. Shadbolt	Sassafras	Sep-04	Fry	2500		Saltas
D. Rockliff	Sassafras	Sep-04	Fry	1500		Saltas
L. Rodgers	Sassafras	Sep-04	Fry	300		Saltas
Skirving Max	Sassafras	Dec-04	Fry	400		North Motton R.U.
Skirving Max	Sassafras	Dec-04	Fry	400		North Motton R.U.
Brown Nick & Malcom	Sassafras	Dec-04	Fry	400		North Motton R.U.
Brown John	Sassafras	Dec-04	Fry	400		North Motton R.U.
Clarke W. & Maloney P.	Sassafras	Dec-04	Fry	200		North Motton R.U.
Skirving Max	Sassafras	Dec-04	Fingerling		400	North Motton R.U.
Skirving Max	Sassafras	Dec-04	Fingerling		300	North Motton R.U.
Brown Nick & Malcom	Sassafras	Dec-04	Fingerling		300	North Motton R.U.
Brown John	Sassafras	Dec-04	Fingerling		300	North Motton R.U.
Brown John	Sassafras	Dec-04	Fingerling		300	North Motton R.U.
Clarke W. & Maloney P.	Sassafras	Dec-04	Fingerling		200	North Motton R.U.
Davey Craig T.	Sheffield	Dec-04	Fry	100		North Motton R.U.
Davey Craig T.	Sheffield	Dec-04	Fry	100		North Motton R.U.
Davey Craig T.	Sheffield	Dec-04	Fingerling		200	North Motton R.U.
Davey Craig T.	Sheffield	Dec-04	Fingerling		200	North Motton R.U.
Fielding W	South Riana	Dec-04	Fry	200		North Motton R.U.
Fielding Greg	South Riana	Dec-04	Fry	200		North Motton R.U.
Fielding Maurie	South Riana	Dec-04	Fry	700		North Motton R.U.
Barker Tony	South Riana	Dec-04	Fry	300		North Motton R.U.
Fielding Bruce	South Riana	Dec-04	Fry	200		North Motton R.U.
Fielding Bill	South Riana	Dec-04	Fry	300		North Motton R.U.
Barker Tony	South Riana	Dec-04	Fingerling		200	North Motton R.U.
Fielding Bill	South Riana	Dec-04	Fingerling		300	North Motton R.U.
Stewart Kerry	Sprent	Dec-04	Fry	200		North Motton R.U.
Rootes T. B. & J. R.	Sprent	Dec-04	Fry	1800		North Motton R.U.
K. & D. Sims & Sons	Sprent	Dec-04	Fry	500		North Motton R.U.
Whelan Alan	Sprent	Dec-04	Fry	500		North Motton R.U.
Rootes T. B. & J. R.	Sprent	Dec-04	Fingerling		2000	North Motton R.U.
Whelan Alan	Sprent	Dec-04	Fingerling		600	North Motton R.U.
R. W. Squibb	Spreyton	Sep-04	Fry	2000		Saltas
Gofton Winifred & James	Sulphur Creek	Dec-04	Fry	200		North Motton R.U.
Elphinstone Scott	Thirlstone	Dec-04	Fry	2000		North Motton R.U.
Elphinstone Scott	Thirlstone	Dec-04	Fry	1500		North Motton R.U.
Elphinstone Scott	Thirlstone	Dec-04	Fry	500		North Motton R.U.
Elphinstone Scott	Thirlstone	Dec-04	Fingerling		1000	North Motton R.U.
Elphinstone Scott	Thirlstone	Dec-04	Fingerling		750	North Motton R.U.
Elphinstone Scott	Thirlstone	Dec-04	Fingerling		400	North Motton R.U.
Elphinstone Scott	Thirlstone	Dec-04	Fingerling		300	North Motton R.U.
Elphinstone Scott	Thirlstone	Dec-04	Fingerling		300	North Motton R.U.
Smith Russell	Ulverstone	Dec-04	Fry	300		North Motton R.U.
Hill Maurice	Ulverstone	Dec-04	Fry	800		North Motton R.U.
Hingston Ray & Kathleen	Ulverstone	Dec-04	Fry	200		North Motton R.U.
Cooper D.	Ulverstone	Dec-04	Fry	300		North Motton R.U.
Hill Maurice	Ulverstone	Dec-04	Fingerling		400	North Motton R.U.
B. Brazendale	Upper Lorinna	Sep-04	Fry	500		Saltas
McKenna J.	West Gawler	Dec-04	Fry	300		North Motton R.U.
McKenna J.	West Gawler	Dec-04	Fry	300		North Motton R.U.
Johnson D.	West Gawler	Dec-04	Fry	300		North Motton R.U.
Johnson D.	West Gawler	Dec-04	Fry	200		North Motton R.U.

Appendix 2 Stocking of private dams for public fishing in 2004-05 (Cont.)

Name	Area	Date	Age	Brown (wild)	Rainbow (domestic)	Origin
McKenna J.	West Gawler	Dec-04	Fingerling		100	North Motton R.U.
McPherson Grant	West Ulverstone	Dec-04	Fry	200		North Motton R.U.
Mitchelsons	Westbury	Dec-04	Fry	5000		Salmon Ponds
Yolla District High School	Yolla	May-05	Yearling		400	Salmon Ponds

Appendix 3 Licensed international visiting anglers by country from 1998-99 to 2004-05

Country	1998-99	1999-00	2000-01	2001-02	2002-03	2003-04	2004-05
Afghanistan							1
Alaska					2		2
Argentina		1				1	1
Austria	4	3	1		4	3	2
Belgium	1	3	2	2	1		2
Bermuda		1					
Botswana		2					
British Columbia					1		
Canada	15	19	19	17	17	14	15
Channel Islands		2					
Chile					2		
China	1		1	1	3		1
Czech Republic					6	3	7
Denmark	2	2	3		3	3	4
Fiji		1				1	
Finland	1	3	3	2		4	1
France	3	8	6	4	7	9	14
Germany	25	24	18	42	19	21	26
Hawaii					3	1	
Holland	1	4	5	9	2	7	3
Hong Kong	5	2	7	15	7	3	6
Hungary				1			
Iceland					2		
Indonesia	3		1	1		1	
Ireland	7	12	6	7	6	3	5
Italy	6	5	1		1	3	2
Israel	3	4	1				
Japan	48	37	25	26	18	16	34
Korea		1	2	1		2	
Kuwait	1						
Malaysia	2		8	3		2	2
Mexico	1	2	2	1			
Monaco					2		1
Nepal							1
Netherlands				5	2	9	4
New Caledonia	8		6	1	1	6	1
New Zealand	23	32	34	30	37	20	40
Norway	3	5	4	3		2	3
Papua New Guinea	1		2				
Philippines			3	1			
Poland				1		2	1
Portugal				1			
Russia					2	1	
Scotland		4			9	6	10
Singapore	30	16	18	16	3	6	8
South Africa	4	9	6	13	5	8	13
Spain			4		4	2	1
Sweden	8		7	6	2	4	
Switzerland	11	12	8	8	6	11	8
Thailand	3	1	1	2		1	1
Tonga					1		
United Kingdom	60	71	95	79	66	65	55
USA	206	197	236	159	134	121	120
Vietnam							4
Zimbabwe							1
Other Overseas	15	26	55	28	12	47	11
Total	501	509	590	486	387	408	400

